



MOTORCYCLE CENTRE STAND MOVING DOLLY

MODEL NO: **MS0651**

Thank you for purchasing a Sealey product. Manufactured to a high standard, this product will, if used according to these instructions, and properly maintained, give you years of trouble free performance.

IMPORTANT: PLEASE READ THESE INSTRUCTIONS CAREFULLY. NOTE THE SAFE OPERATIONAL REQUIREMENTS, WARNINGS & CAUTIONS. USE THE PRODUCT CORRECTLY AND WITH CARE FOR THE PURPOSE FOR WHICH IT IS INTENDED. FAILURE TO DO SO MAY CAUSE DAMAGE AND/OR PERSONAL INJURY AND WILL INVALIDATE THE WARRANTY. KEEP THESE INSTRUCTIONS SAFE FOR FUTURE USE.



Refer to instructions

1. SAFETY

- ✓ Maintain the dolly in good condition (use an authorised service agent).
- ✓ Replace or repair damaged parts. *Use genuine parts only. Unauthorised parts may be dangerous and will invalidate the warranty.*
- ✓ Locate the dolly in a suitable work area. Keep area clean and tidy and free from unrelated materials, and ensure that there is adequate lighting.
- ✓ Ensure that the floor is level and strong enough (preferably concrete) to take the weight of the dolly and the motorcycle.
- ✗ **DO NOT** use the dolly on tarmac, as the surface may be unstable.
- ✓ Keep the dolly clean for best and safest performance.
- ✗ **DO NOT** exceed the rated capacity, the maximum motorcycle weight is 220kg.
- ✓ Maintain correct balance and footing, **DO NOT** over reach. Ensure the floor is not slippery and wear non-slip shoes.
- ✓ Keep children and unauthorised persons away from the work area.
- ✗ **DO NOT** use the dolly for a task it is not designed to perform.
- ✗ **DO NOT** use the dolly if it is damaged.
- ✗ **DO NOT** use the dolly when you are tired or under the influence of alcohol, drugs or intoxicating medication.
- ✗ **DO NOT** allow untrained persons to use the dolly.
- ✗ **DO NOT** make any modifications to the dolly.
- ✓ Before storing in safe area, ensure that all parts are clean and free of grease and oil.
- **WARNING!** The warnings, cautions and instructions in this manual cannot cover all possible conditions and situations that may occur. It must be understood that common sense and caution are factors which cannot be built into this product, but must be applied by the operator.

2. INTRODUCTION

This motorcycle moving dolly can be used to manoeuvre motorcycles (up to 220kg vehicle weight) with centre-stands and is perfect for places where space is restrictive. The centre stand locates on the 4mm thick hardened steel plate and the 360 degree castors allow the bike to be moved in any direction. Complete with a hand operated built-in-brake mechanism which is ideal for workshop, showroom and home garage use.

3. SPECIFICATION

Model No: **MS0651**
Capacity: 220kg

4. ASSEMBLY

- 5.1. Attach the castors securely using nylock nuts.
NOTE: The castors do not have brakes attached.

5. OPERATION

- 5.1. Apply the brake on the dolly by rotating the handle as shown in (fig.1) to position shown in (fig.2).
- 5.2. Position the dolly under the motorcycle.
- 5.3. Line up the motorcycle centre stand with the dolly.
- 5.4. Kick the stand down so it is positioned in the centre of the dolly and raise the bike onto the centre stand.
- 5.5. Release the brake by moving the brake handle as shown in (fig.2).
- 5.6. Holding the handle bars, move the bike in any direction.
- 5.7. Apply the brake to prevent dolly moving.

6. MAINTENANCE

- 6.1. Wipe with a damp cloth to remove dirt.
- 6.2. Blow with compressed air to remove dust and keep the castors clean.

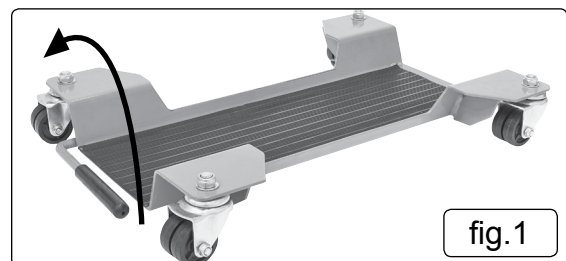


fig.1

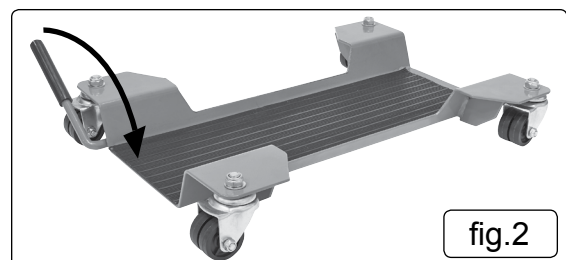


fig.2

Parts support is available for this product. Please log on to www.sealey.co.uk, email sales@sealey.co.uk or telephone 01284 757500



ENVIRONMENT PROTECTION

Recycle unwanted materials instead of disposing of them as waste. All tools, accessories and packaging should be sorted, taken to a recycling centre and disposed of in a manner which is compatible with the environment. When the product becomes completely unserviceable and requires disposal, drain any fluids (if applicable) into approved containers and dispose of the product and fluids according to local regulations.

Note: It is our policy to continually improve products and as such we reserve the right to alter data, specifications and component parts without prior notice.

Important: No Liability is accepted for incorrect use of this product.

Warranty: Guarantee is 12 months from purchase date, proof of which is required for any claim.

Sealey Group, Kempson Way, Suffolk Business Park, Bury St Edmunds, Suffolk. IP32 7AR



01284 757500



01284 703534



sales@sealey.co.uk



www.sealey.co.uk