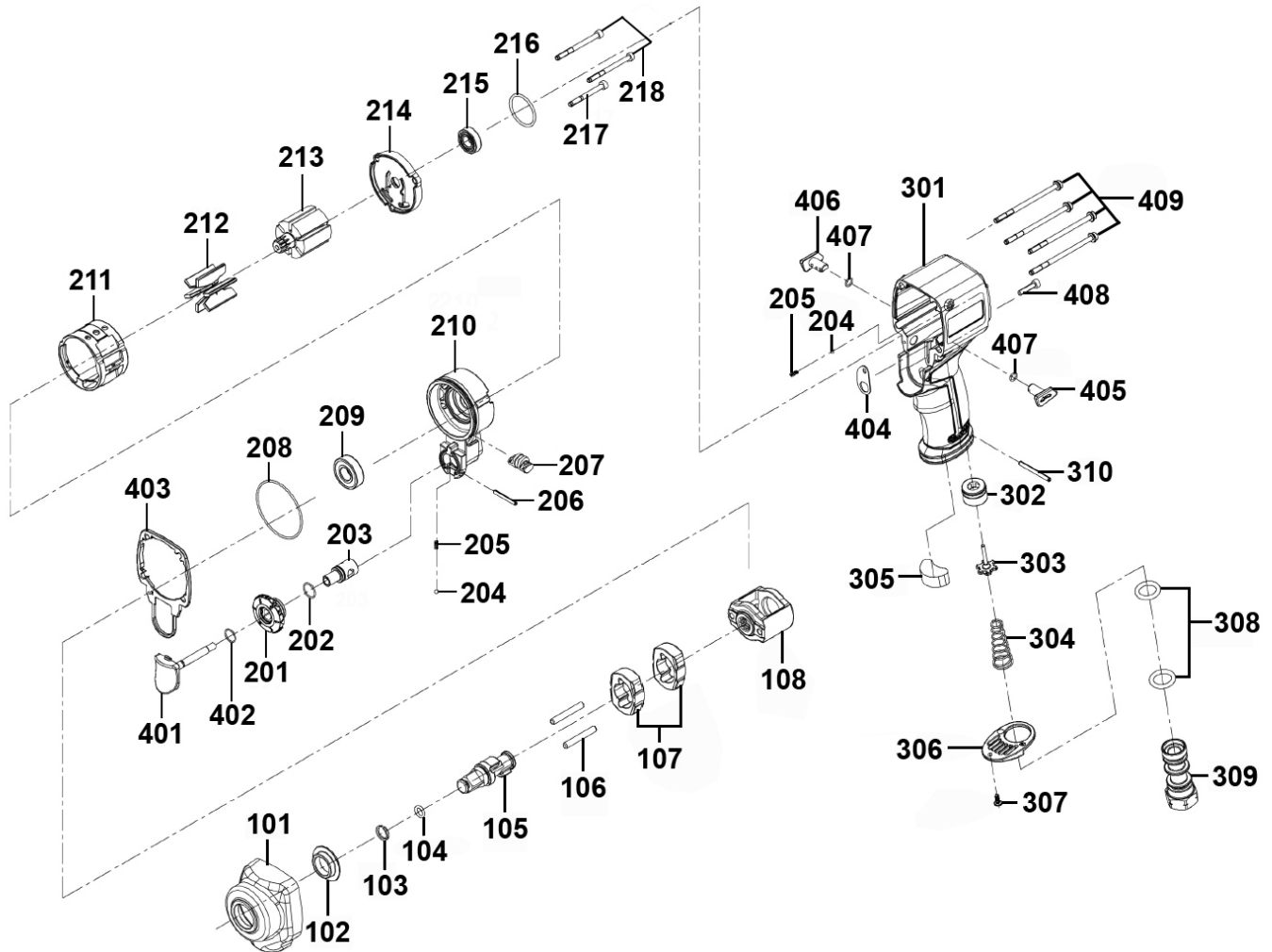


Parts Information:  
**Air Impact Wrench 1/2" Sq Drive Stubby -  
 Twin Hammer**  
**Model No: SA6002S.V2**



| Item | Part No.       | Description                           |
|------|----------------|---------------------------------------|
| 101  | SA6002S.V2-101 | Hammer Case                           |
| 102  | SA6002S.V2-102 | Anvil Bushing                         |
| 103  | SA6002S.V2-103 | Socket Retainer                       |
| 104  | GSA08.09-4     | O-Ring, (Ex: 11.21 In: 7.65 Cs: 1.78) |
| 105  | SA6002S.V2-105 | Anvil                                 |
| 106  | SA6002S.V2-106 | Hammer Pin                            |
| 107  | SA6002S.V2-107 | Hammer                                |
| 108  | SA6002S.V2-108 | Hammer Cage                           |
| 201  | SA6005.V2-201  | Regulator Assembly                    |
| 202  | SA6004.V2-202  | O-Ring (8x1mm)                        |
| 203  | SA6004.V2-203  | Regulator Stem                        |
| 204  | SB-2.5         | Steel ball 2.5mm                      |
| 205  | SA6005.V2-205  | Spring Dia 2.5mm                      |
| 206  | SA6005.V2-206  | Spring Pin Dia 2.7mm                  |

| Item | Part No.       | Description                       |
|------|----------------|-----------------------------------|
| 207  | SA6002S.V2-207 | Reverse Stem                      |
| 208  | SA6002S.V2-208 | O-Ring (44x1.5mm)                 |
| 209  | B/R8           | Bearing R8                        |
| 210  | SA6002S.V2-210 | Front End Plate Ass'y             |
| 211  | SA6002S.V2-211 | Cylinder                          |
| 212  | SA6002S.V2-212 | Rotor Blade                       |
| 213  | SA6002S.V2-213 | Rotor                             |
| 214  | SA6002S.V2-214 | Rear End Plate                    |
| 215  | B/R6           | Bearing R6                        |
| 216  | SA6002S.V2-216 | O-Ring (25x1.5mm)                 |
| 217  | SCB432.SB      | Socket Cap Bolt M4 x 32 Black     |
| 218  | SCB442.SB      | Socket Head Cap Screw M4x42 Black |
| 301  | SA6002S.V2-301 | Housing Ass'y (c/w Air Inlet Set) |
| 302  | SA6004.V2-302  | Valve Seat Ass'y                  |

**NOTE:** It is our policy to continually improve products and as such we reserve the right to alter data, specifications and component parts without prior notice. There may be alternative versions of this product, please contact us should you require this information.

**IMPORTANT:** No liability is accepted for incorrect use of product. Spare parts must be fitted by a competent person

**WARRANTY:** Guarantee is 12 months from purchase date, proof of which will be required for any claim.



Parts Information:  
**Air Impact Wrench 1/2" Sq Drive Stubby -  
Twin Hammer**  
**Model No: SA6002S.V2**

| Item | Part No.       | Description                                       |
|------|----------------|---|
| 303  | SA6004.V2-303  | Valve Stem Ass'y                                  |
| 304  | SA6005.V2-304  | Spring Conical                                    |
| 305  | SA6002S.V2-305 | Muffler   |
| 306  | SA6004.V2-306  | Exhaust Deflector                                 |
| 307  | MSP38.SB       | Machine Screw Pan Head Phillips M3 x 8mm<br>Black |
| 308  | SA6004.V2-308) | O-Ring (12x3mm)                                   |
| 309  | SA6004.V2-309  | Air Inlet   |
| 310  | SA6002S.V2-310 | Spring Pin  |

| Item | Part No.       | Description                          |
|------|----------------|--------------------------------------|
| 401  | SA6004.V2-401  | Trigger Ass'y                        |
| 402  | SA6005.V2-402  | O-Ring, (Ex: 5.00 In: 3.50 Cs: 0.75) |
| 403  | SA6002S.V2-403 | Front End Plate Gasket               |
| 404  | SA6004.V2-404  | Gasket                               |
| 405  | SA6002S.V2-405 | Reverse Button                       |
| 406  | SA6002S.V2-406 | Forward Button                       |
| 407  | SA6004.V2-407  | O-Ring                               |
| 408  | SCB418.SB      | Socket Cap Bolt M4 x 18mm Black      |
| 409  | SCB467.SB      | Socket Cap Bolt M4 x 67 Black        |

**NOTE:** It is our policy to continually improve products and as such we reserve the right to alter data, specifications and component parts without prior notice. There may be alternative versions of this product, please contact us should you require this information.

**IMPORTANT:** No liability is accepted for incorrect use of product. Spare parts must be fitted by a competent person

**WARRANTY:** Guarantee is 12 months from purchase date, proof of which will be required for any claim.

**Sealey Group**, Kempson Way, Suffolk Business Park, Bury St Edmunds, Suffolk. IP32 7AR



01284 757500



01284 703534



sales@sealey.co.uk



www.sealey.co.uk