



# PETROL INJECTOR PULLER - FORD ECOBOOST

MODEL NO: **VS2067**

Thank you for purchasing a Sealey product. Manufactured to a high standard, this product will, if used according to these instructions, and properly maintained, give you years of trouble free performance.

**IMPORTANT:** PLEASE READ THESE INSTRUCTIONS CAREFULLY. NOTE THE SAFE OPERATIONAL REQUIREMENTS, WARNINGS & CAUTIONS. USE THE PRODUCT CORRECTLY AND WITH CARE FOR THE PURPOSE FOR WHICH IT IS INTENDED. FAILURE TO DO SO MAY CAUSE DAMAGE AND/OR PERSONAL INJURY AND WILL INVALIDATE THE WARRANTY. KEEP THESE INSTRUCTIONS SAFE FOR FUTURE USE.



Refer to instructions



Wear eye protection



Wear protective gloves

## 1. SAFETY

- ❑ **WARNING!** Ensure all Health and Safety, local authority, and general workshop practice regulations are strictly adhered to when using tools.
  - \* **DO NOT** use tools if damaged or worn.
  - ✓ Maintain the tools in good and clean condition for best and safest performance.
  - ✓ Ensure all threads are clean and well lubricated.
  - ✓ Always check that puller is correctly assembled and is square with the workpiece.
  - ✓ Ensure the nuts and bolts are tight on the jaw heads.
  - ✓ If vehicle is raised, ensure it is adequately supported with axle stands, ramps, etc. as appropriate.
  - ✓ Wear suitable clothing to avoid snagging. **DO NOT** wear jewellery. Tie back long hair.
  - ✓ Wear approved eye protection. A full range of personal safety equipment is available from your Sealey Stockist.
  - ✓ Where possible shield workpiece with canvas or similar to provide protection against failed parts.
  - \* **DO NOT** heat puller jaws when heating a gear or bearing as this will affect the temper and, therefore, the strength of the material.
  - \* **DO NOT** hit workpiece with a hammer if workpiece has not moved with maximum puller force applied. Use a larger capacity puller.
  - ✓ Account for all tools and parts being used and **DO NOT** leave them in or on the vehicle.
- IMPORTANT:** Always refer to the vehicle manufacturers service instructions, or proprietary manual, to establish the correct procedure and data.
- NOTE:** This tool will exert strong forces on the object being worked on and may damage some objects depending on force required.

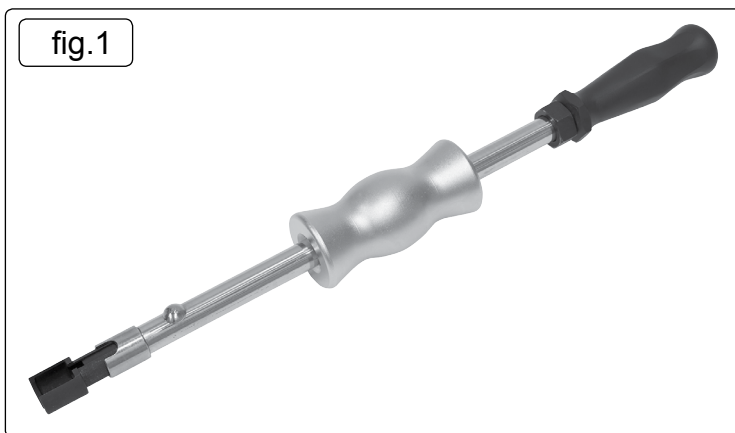
## 2. INTRODUCTION

Extracts petrol injectors easily without damaging the injector or head. Includes slide hammer and specially designed injector claw. Equivalent to OEM 310-206.

## 3. APPLICATIONS

Application(s): ..... Ford; GDI & GTDI EcoBoost engine ranges from 1.0L to 2.3L

## 4. OPERATION



### 4.1. TO REMOVE INJECTOR

**NOTE:** Take care when removing fuel lines due to the risk of residual fuel pressure and fuel leakage.

- 4.1.1. Remove the electrical connections, fuel supply and injector fastenings.
- 4.1.2. Slide the coloured sleeve to the upper part of the injector clamp.
- 4.1.3. Loosen the lock nut on the slide hammer and the injector clamp, slide the injector clamp over the injector and tighten the injector clamp and locknut.
- 4.1.4. Slide the coloured sleeve fully to its lower position observing the cut out.
- 4.1.5. Slide the slide hammer upwards to remove the injector.

**ENVIRONMENT PROTECTION**

Recycle unwanted materials instead of disposing of them as waste. All tools, accessories and packaging should be sorted, taken to a recycling centre and disposed of in a manner which is compatible with the environment. When the product becomes completely unserviceable and requires disposal, drain any fluids (if applicable) into approved containers and dispose of the product and fluids according to local regulations.

**Note:** It is our policy to continually improve products and as such we reserve the right to alter data, specifications and component parts without prior notice.

**Important:** No Liability is accepted for incorrect use of this product.

**Warranty:** Guarantee is 12 months from purchase date, proof of which is required for any claim.

**Sealey Group, Kempson Way, Suffolk Business Park, Bury St Edmunds, Suffolk. IP32 7AR**



**01284 757500**



**01284 703534**



**sales@sealey.co.uk**



**www.sealey.co.uk**