

# DF5.5 Specification



## **DF5.5 Dry Filter Spray Booth**

*All Airflow Spraybooths are designed to both meet the latest European regulations and comply with HSG 178 - 'The Spraying of Flammable Liquids' and they carry the benefit of the CE mark if destined for supply within the EC.*

The fan used on all *Airflow* Spraybooths is our unique 'cartridge' style design, specifically developed for use in aggressive environments where solvents and other dissolved contaminants within the exhaust air stream can quickly shorten the life of a conventional fan.

External Dimensions	- 2.25m high* x 5.5m wide x 2.25m deep* (*Excluding 0.55m long fan, e.g. top and rear fan mounting options available)
Internal Working Area	- 2.2m high x 5.4m wide x 1.2m deep (extendable by standard modules)
Ventilation	- 2 x <i>Airflow</i> 2.2kW non-flameproof belt-driven axial flow fan (single, three phase and flameproof options available) - 2 x 630mm diameter flue to atmosphere
Filter Media	- Options: Standard concertina type High-efficiency concertina type (additional cost) Open-weave matting (requiring frame conversion at additional cost)
Noise Levels	- Booth face: unattenuated - 87dB(A) attenuated - 73dB(A) - Free field: unattenuated - 76dB(A) @ 3 duct dia (approx)

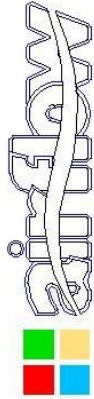
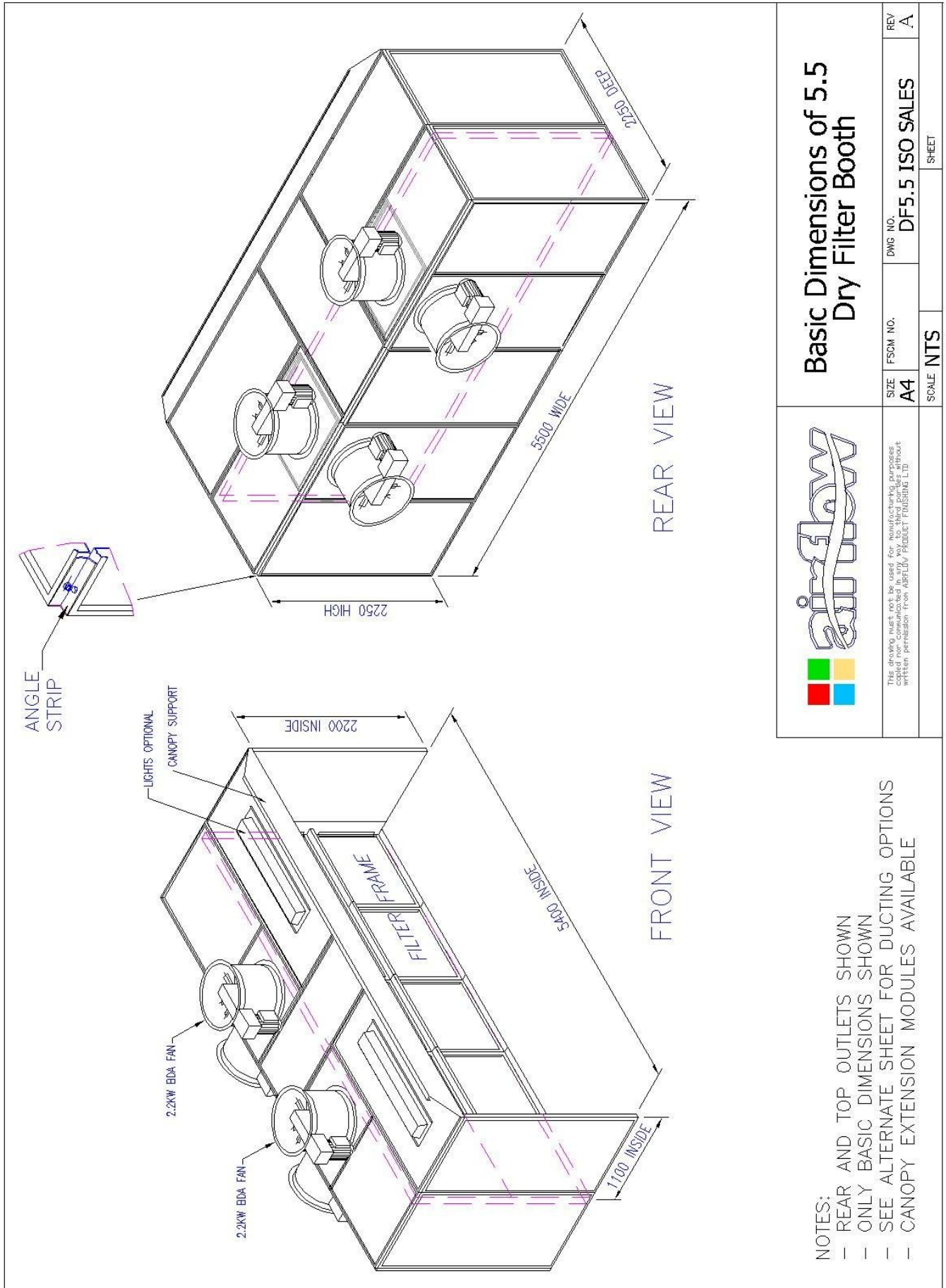
\* Noise levels are provided for guidance purposes only, as they are likely to be affected by other factors, e.g. additional sources of noise within the surrounding area, type of filter medium, installation format, etc.

### Construction:

- |       |   |
|-------|---|
| Booth | - 1.2mm prime galvanised-steel CNC punched and formed panels, uniquely styled for simple assembly, providing greater rigidity and aesthetic finish. |
| Fan   | - Heavy-duty mild-steel fabricated body complete with RSA flanges.  |

We recommend the application of Peelable Coating to the inner face of the Booth canopy to simplify maintenance, reduce fire risk and, prolong the life of the Booth.

Consideration should be given for replacement air which, in volume, should equal that being ventilated whilst Fans are in operation. And, we shall be pleased to advise standard *Airflow* options for your installation.



## Basic Dimensions of 5.5 Dry Filter Booth

SIZE	FSCM NO.	DWG NO.	REV
A4		DF5.5 ISO SALES	A
SCALE		NTS	SHEET

# DF5.5 Specification



**A** Through-Roof Kit.  
(Internal top-outlet fan)

**B** Through-Wall Kit.  
(Internal top-outlet fan)

**C** Through-Wall Kit.  
(High-level external fan)

**D** Through-Wall Kit.  
(Internal rear-outlet fan)

**E** Through-Wall Kit.  
(External rear-outlet fan)

**F** Through-Wall Kit.  
(Internal rear-outlet fan)

**G** Through-Wall Kit.  
(External rear-outlet fan)

Description	Part No	A	B	C	D	E	F	G
Fan Flange	FLG	✓		✓	✓	✓(2)	✓	✓(3)
3m Straight Duct	3MDS	✓	✓	✓	✓	✓		
Adjustable RoofPlate c/w WeatherSkirt.	ARPT	✓						
Straight Connector	CON				✓			
Efflux Cowl	EFC	✓				✓		
Duct Inspection Kit	DIS					✓		
Bend Flange	BFLG					✓		
90° Bend	B90		✓(2)	✓(2)	✓	✓		
Short Duct	HDD		✓	✓	✓	✓		
Wall Plate	WP		✓	✓	✓	✓	✓	
Wall Bracket	BKT			✓	✓	✓		
Heavy-duty Wall Bracket	HDFSB		✓		✓			
Fan Support Legs	FSL/1700					✓		✓
Fan Support Legs	FSL/2500						✓	✓
Weather Taper c/w Bird Grill	WTBG							
Guy Rope Set	GRST							

Note: Local Authority Permission must be required to operate horizontal discharge ducting options.

REVISIONS	DATE	SIG.
C. REVISED & RE-ISSUED	28.10.2018	ARR
B. REVISED & RE-ISSUED	23.10.18	IE
A. ISSUED FOR MANUFACTURE		

Drawn By: [ ] Scale: [ ] Date: [ ]  
 Checked By: [ ] Date: [ ]  
 Title: STANDARD DUCTING ARRANGEMENTS  
 Drawing No: [ ]  
 ID: STD\_DUCT\_ARR

**Kit Reference:**

TRDKXE  
 TWDKV1  
 TWDKVEH  
 TWDKI  
 TWDKVE  
 TWDI  
 TWDKI

