

Polyurethane Lacquer for Wooden Flooring

Information

A single pack Moisture Cured Polyurethane Lacquer, producing a finish with excellent durability and a high level of resistance to household liquids.

Always stir well and check sheen before use.
For professional use only.

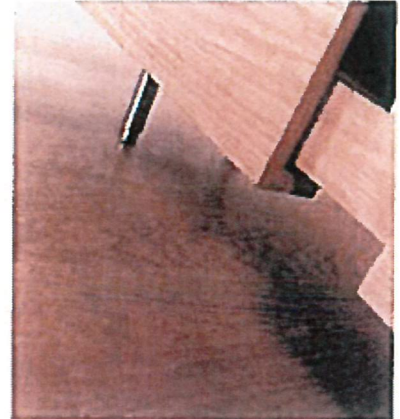
Polyurethane Lacquer Gloss - TA4500

Polyurethane Lacquer Satin - See Below*

Matting Base - SUND9136

*For a Satin Finish: Add 7.5% Matting Base SUND9136. Stir well before use.

For best results use the Satin Coat only as the final coat over Gloss Lacquer TA4500 for better clarity and sanding



Application

Only decant sufficient material for one hours work to prevent gellation. See storage instructions.

Apply by brush or lambs wool mop applicator.

Normal traffic: Apply 2 coats
Heavy traffic: Apply 3 coats

The first coat may be thinned using TT2500 up to 20% to ease application.

The lacquer should be lightly abraded between coats using 120 or 150 grit paper. Ensure good ventilation during application and drying.

Uses

Designed for application to internal Hardwood or Softwood floors in domestic and a wide range of commercial uses such as shops, offices, pubs and public buildings.

For other uses, contact Becker Acroma Technical Department for advice

Not suitable for use on gymnasium or sports floors.

Preparation

New Floors

The surface to be finished must be clean, dry and free from contamination. Pre-sand using 100 or 120 grit paper and remove sanding dust prior to application.

Previously Finished Floors

Not suitable for use on floors previously finished with Acid Catalysed Lacquer as severe yellowing may occur.

It is very important to remove all traces of wax or polish and to ensure that the previous coating is sound. Wash with white spirit to remove all traces of wax/polish and sand thoroughly using 100 or 120 grit paper.

Ensure the surface is clean and dry and remove all sanding dust. It is recommended that a test area is finished to check the adhesion of the lacquer to the previous coating.

Ensure good ventilation if using white spirit to remove old polish. If in doubt, sand the floor back to bare timber, removing all the old coating then treat as a new floor.

A fast drying lacquer with excellent durability

Drying

Sanding-recoating approximately 2-4 hours under normal drying conditions (20°C & 60% RH). Floors will take normal foot traffic after overnight drying, but may remain susceptible to marking until fully cured 3 days after finishing.

These times will be extended under conditions of low temperatures and/or low humidity.

Coverage

8-12 sq. metres per litre dependent upon surface and application.

Cleaning Equipment

Tools, brushes etc. may be cleaned using Thinner TT2500

Storage

Exposure to atmospheric moisture will cause the lacquer to gel. Protect from moisture by replacing the cap or lid tightly after use. Part filled cans are particularly susceptible to gellation.

Maintenance

Vacuum clean or wipe with damp cloth or mop. Do not over-wet the floor. If after a period of time the floor starts to show signs of wear, a further coat of lacquer can be applied after preparation as detailed above. Floors can be polished if desired.

Packaging

Available in 5 Litres and 1 Litre containers

Health & Safety

Refer to Health and Safety Data Sheet for individual products

Polyurethane Lacquer for Wooden Flooring

A fast drying lacquer with excellent durability

A single pack moisture cured polyurethane (PU) lacquer, producing a finish with excellent durability and a high level of resistance to household liquids.

Information

A single pack moisture cured polyurethane (PU) lacquer, producing a finish with excellent durability and a high level of resistance to household liquids.

Always stir well and check sheen before use. For professional use only.

Polyurethane Lacquer Gloss

TA4500-50

PU Lacquer Satin See Below*

Matting Base SUND9136

*For a Satin Finish: Add 7.5% Matting Base SUND9136. Stir well before use.

For best results use the Satin Coat only as the final coat over Gloss Lacquer TA4500-50 for better clarity and sanding.

Application

Only use sufficient material for one hours work to prevent gellation. See storage instructions. Apply by brush or lambs wool mop applicator.

Normal traffic: Apply 2 coats

Heavy traffic: Apply 3 coats

The first coat may be thinned using TT2500 up to 20% to ease application. The lacquer should be lightly abraded between coats using 120 or 150 grit paper. Ensure good ventilation during application and drying.

Uses

Designed for application to internal hardwood or softwood floors in domestic and a wide range of commercial uses such as shops, offices, pubs and public buildings.

For other uses, contact Sherwin Williams technical department for advice.

Not suitable for use on gymnasium or sports floors.

Preparation

New Floors The surface to be finished must be clean, dry and free from contamination. Pre-sand using 100 or 120 grit paper and remove sanding dust prior to application.

Previously Finished Floors Important, not suitable for use on floors previously finished with acid catalysed lacquer as severe yellowing of the coating may occur.

It is very important to remove all traces of wax or polish and to ensure that the previous coating is sound. Wash with white spirit to remove all traces of wax/polish and sand thoroughly using 100 or 120 grit paper.

Ensure the surface is clean and dry and remove all sanding dust. It is recommended that a test area is finished to check the adhesion of the lacquer to the previous coating.

Ensure good ventilation if using white spirit to remove old polish. If in doubt, sand the floor back to bare timber, removing all the old coating then treat as a new floor.

Drying

Sanding-recoating approximately 2-4 hours under normal drying conditions (20°C & 60% RH). Floors will take normal foot traffic after overnight drying, but may remain susceptible to marking until fully cured 3 days after finishing. These times will be extended under conditions of low temperatures and/or low humidity.

Coverage

8-12 sq. metres per litre dependent upon surface and application.

Cleaning Equipment

Tools, brushes etc. may be cleaned using thinner TT2500.

Storage

Exposure to atmospheric moisture will cause the lacquer to gel. Protect from moisture by replacing the cap or lid tightly after use. Part filled cans are particularly susceptible to gelation.

Maintenance

Vacuum clean or wipe with damp cloth or mop. Do not over-wet the floor. If after a period of time, the floor starts to show signs of wear, a further coat of lacquer can be applied after preparation as detailed above. Floors can be polished if desired.

Packaging

Available in 5ltrs and 1ltr containers

Health & Safety

Refer to Health and Safety Data Sheet for individual products

Sherwin-Williams UK Coatings Limited

A1 Business Park - Knottingley - West Yorkshire - WF11 0BU - England

tel: 01977 673363 fax: 01977 673521

email: ukinfo@sherwin.com visit: www.sayerlack.co.uk

Sherwin Williams Ireland Limited

53 Robin Hood Industrial Estate - Dublin 22 - Ireland

tel: +353 (1)460 1445 fax: +353 (1) 460 1449

email: irlsales@sherwin.com visit: www.sayerlack.co.uk

SHERWIN-WILLIAMS®