



Science.
Applied to Life.™



3M™ PPS™ Series 2.0 Paint Cup System

The next evolution
of painting productivity.



Better. To help make *you* better.

As a painter, you take great pride in your work. You know that the ultimate quality of the repair depends on the job you do in the paint booth. You don't have time to fool around with unproven tools. Time is money, quality is king and you've got vehicles to move out the door.

That's why 3M invented the first disposable paint cup system nearly 20 years ago – the 3M™ PPS™ Paint Preparation System. Painters needed a cleaner, faster, more efficient method of mixing and applying paint.

Now, after thousands of hours of watching and working with hundreds of painters around the world, 3M scientists have redesigned the 3M™ PPS™ System while keeping the most effective parts.

Introducing the 3M™ PPS™ Series 2.0 Paint Cup System.

Reinvented from top to bottom, it's designed to help make your life easier. To make your painting process cleaner and faster. And to make you a better, more productive painter – more confident in the quality of your work and better able to exceed the expectations of your customers *and* your shop.

It's the next evolution of the 3M™ PPS™ painting revolution. Don't let anything come between you and a faster, cleaner, higher quality paint job. Demand 3M™ PPS™ Series 2.0.

The 3M logo, consisting of the letters '3', 'M', and 'M' in a bold, red, sans-serif font.The PPS logo, featuring the letters 'PPS' in a bold, black, sans-serif font. To the right of the letters is a stylized icon of a paint gun. Below the logo is the text 'Paint Application Solutions' in a smaller, black, sans-serif font.

PPS™
Paint Application Solutions

The 3M™ PPS™ Series 2.0 Paint Cup System

Reinvented from connection to cup.

Improved six ways.

Adopted by painters in every corner of the globe, the 3M™ PPS™ System has been a major boost to painting productivity and quality for nearly 20 years. Now 3M has made it even better in six critical areas, from top to bottom.

- 3 Domed Lid with Full-Diameter Filter.**
Allows more paint below the filter to delay spitting at the end of the job.

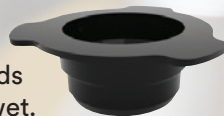
- 4 New Cup in Every Lid and Liner Kit.**
Start with a clean cup more often, reducing paint build-up. On-cup ratios and fill markings eliminate traditional mixing cups.

- 5 Access Window.**
Allows you to hold the liner for cleaner, easier lid removal when refilling. Also easier to check paint levels.

- 6 Larger Cup Sealing Plug.**
Allows you to seal and protect coatings upside down with greater stability when not in use. Use fewer lids by keeping filters wet.

- 1 Wide Spout Adapter with Four-Point Connection.**
Maximises stability while spraying. Makes cleaning easier.

- 2 Quarter-Turn Lid Locking System.**
Comes with every lid. Stays cleaner. Locks faster. Fewer parts to keep track of.



Post in your mixing room.

Cut your costs by picking the cup that fits the job.

Select the right format, for your need and save money on paint by reducing the chance of over mixing.

Four sizes are available to fit the most common repairs in your shop. Stock them all to maximise your savings!



Spot or 1-panel repairs

Mini cups

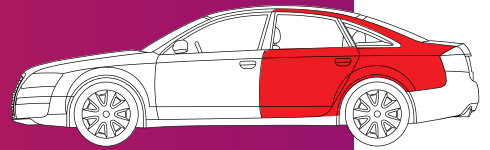
Ideal for areas requiring 200ml or less of material.



2-panel repairs

Midi cups

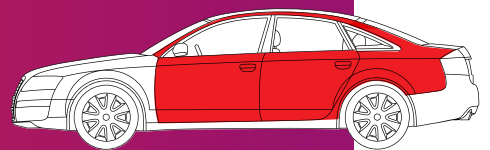
Ideal for areas requiring 400ml or less of material.



3-panel repairs

Standard cups

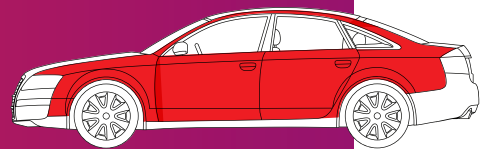
Ideal for areas requiring 650ml or less of material.



4-panel repairs

Large cups

Ideal for areas requiring 850ml or less of material, including large, clear coat batches.



Always empty out 3M™ PPS™ liners and containers into appropriate disposal receptacles.

Please dispose according to your local regulations.

3M™ PPS™ Series 2.0 Paint Cup System

Most common part numbers and ordering information.

Part No.	Description	Items/kit	Kits/case	Predecessor Part No.
125 Micron liner cup system kits				
26740	Large 850ml Lids and Liners - 125 micron filter	50	1	16740
26026	Standard 650ml Lids and Liners - 125 micron filter	50	1	16026
26312	Midi 400ml Lids and Liners - 125 micron filter	50	1	16312
26752	Mini 200ml Lids and Liners - 125 micron filter	50	1	16752

* Note: Each kit contains 32 sealing plugs and 1 cup; each lid includes a quarter-turn lid locking system

200 Micron liner cup system kits				
26024	Large 850ml Lids and Liners - 200 micron filter	50	1	16024
26000	Standard 650ml Lids and Liners - 200 micron filter	50	1	16000
26112	Midi 400ml Lids and Liners - 200 micron filter	50	1	16112
26114	Mini 200ml Lids and Liners - 200 micron filter	50	1	16114

Adapters for 3M™ PPS™ Series 2.0				
20573A	PPS Series 2.0 Adapter, Type S-40A	10	1	5073A
26033	PPS Series 2.0 Adapter, Type S-3	10	1	16033
20677	PPS Series 2.0 Adapter, Type S-43	10	1	50677
26032	PPS Series 2.0 Adapter, Type S-2	10	1	16032
26036	PPS Series 2.0 Adapter, Type S-6	10	1	16036
20587	PPS Series 2.0 Adapter, Type S-41	10	1	50587
26039	PPS Series 2.0 Adapter, Type S-9	10	1	16039
26038	PPS Series 2.0 Adapter, Type S-8	10	1	16038
20458	PPS Series 2.0 Adapter, Type S-32	10	1	50458
26035	PPS Series 2.0 Adapter, Type S-5	10	1	16035

Accuspray™ head for 3M™ PPS™ Series 2.0				
26614	Atomising Head Refill Pack, 1.4mm, Orange	4	6	16612
26618	Atomising Head Refill Pack, 1.8mm, Clear	4	6	16611
26620	Atomising Head Refill Pack, 2.0mm, Red	4	6	16609

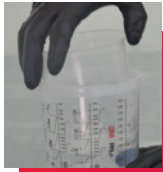
Part No.	Description	Items/carton	Carton/case
Hard cups			
26023	Large Cups 850ml	1	4
26001	Standard Cups 650ml	1	4
26122	Midi Cups 400ml	1	4
26115	Mini Cups 200ml	1	4



Pro tips and tricks.

- When removing the lid and liner from the hard cup, twist lid to unlock, place fingers through hole in bottom of cup and push liner upwards, releasing lid and liner together.
- Use the wide base on your 3M™ PPS™ Series 2.0 Cup Sealing Plugs to stand your cups upside down when not in use, helping to keep the filter mesh wet.
- Eliminate traditional mixing cups and filters by mixing materials right inside your 3M™ PPS™ Series 2.0 Cups. Each lid contains a clean, welded-in filter.
- Keep your red 3M™ PPS™ Dispensers. They still work with all 3M™ PPS™ Series 2.0 Lids and Liners.
- Stock all kit sizes to always have the right size cup for the job, reducing your cost per use.

7 simple steps to the perfect paint job.



1 Insert a disposable liner in the cup.



4 Choose the right adapter for your spray gun. Push down and twist until adapter locks into lid. (Go to 3Mbodyshop.co.uk to find the adapter that fits your spray gun.)



2 Mix paint right inside the 3M™ PPS™ Series 2.0 Cup and Liner. (Note: Reduce material waste by not using a traditional mixing cup or pre-filtering.)



5 When finished spraying, disconnect air line, invert gun and pull trigger to return excess paint to cup. Gently tap 3M™ PPS™ Series 2.0 Lid and Liner on a surface to help break surface tension of liquid and allow it to flow back into liner.



3 Place lid on top of cup, align black portion of quarter-turn lid locking system with cup access window and push down. Twist to lock.



6 Use the 3M™ PPS™ Series 2.0 Cup Sealing Plug to seal and protect coatings not in use, in accordance with local regulations or authorities. Be sure to see Pro Tips section for easy lid and liner removal from hard cup.



7 Consult paint or solvent Safety Data Sheets (SDS) in addition to local regulations or authorities for safe use and proper disposal.



Personal Protective Equipment (PPE) helps reduce exposure to certain workplace hazards. It is ultimately the responsibility of the employer to select the most appropriate PPE based on a full risk assessment. Always read the product performance, warnings and limitations before selection and use.

For more information contact your 3M representative or authorised distributor, or visit 3Mbodyshop.co.uk

3M

Automotive Aftermarket Division

3M United Kingdom PLC
3M Centre, Cain Road
Bracknell RG12 8HT

Please recycle. Printed in the UK.
© 3M 2019. 3M, Accuspray and PPS are trademarks of 3M company. All rights reserved.
60-4402-7964-8. J456426 AB008/18

Warranty conditions for 3M products are determined with the sales contract documents and with the mandatory and applicable clause, excluding any other warranty or compensation.