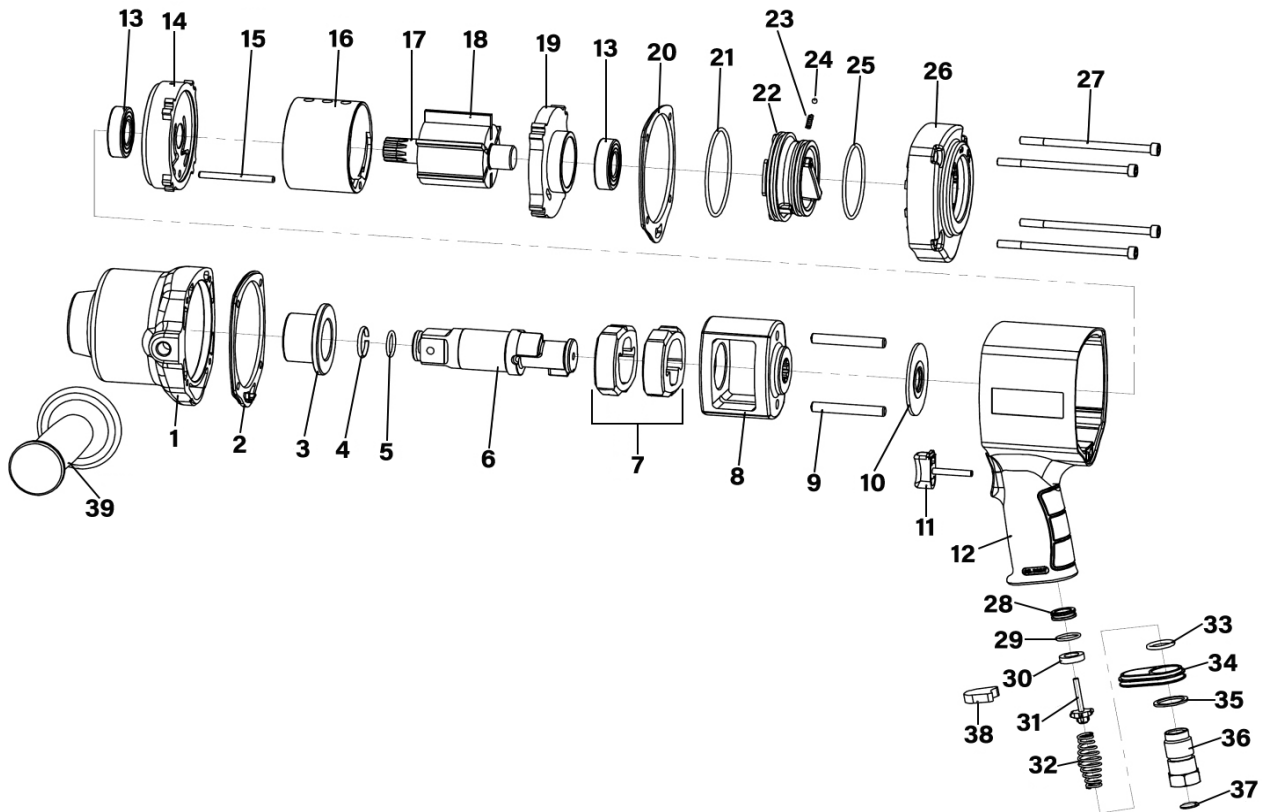


Parts Information:
Air Impact Wrench 1" Sq Drive - Twin Hammer
Model No: GSA6005



Item	Part No.	Description
1	GSA6005.01	Hammer Case
2	GSA6005.02	Rubber Gasket
3	GSA6005.03	Anvil Bushing
4	GSA6005.04	Retaining Ring
5	SA682.V2-60	O-Ring, (Ex: 23.96 In: 18.72 Cs: 2.62)
6	GSA6005.06	Anvil
7	GSA6005.07	Hammer
8	GSA6005.08	Hammer Cage
9	GSA6005.09	Hammer Pin
10	GSA6005.10	Gasket
11	GSA6005.11	Trigger
12	GSA6005.11A	Handle Ass'y
13	GSA6005.13	Bearing
14	GSA6005.14	Front End Plate
15	GSA6005.15	Pin
16	GSA6005.16	Cylinder
17	GSA6005.17A	Rotor Ass'y
18	GSA6005.18	Rotor Vane
19	GSA6005.19	Rear End Plate
20	GSA6005.20	Rubber Gasket

Item	Part No.	Description
21	GSA6005.21	O-Ring, (Ex: 69.96 In: 66.40 Cs: 1.78)
22	GSA6005.22	Knob, Timing Switch, Red, OD: 72mm, 52mm
23	GSA6005.23	Spring Dia 4mm
24	GSA6005.24	Steel Ball
25	SA6007.21	O-Ring, (Ex: 57.26 In: 53.70 Cs: 1.78)
26	GSA6005.26	Rear Cover
27	GSA6005.27	Fastening Screw
28	GSA6005.28	Inlet Gasket
29	SM40.V2-35	O-Ring, (Ex: 20.73 In: 17.17 Cs: 1.78)
30	GSA6005.30	Rubber Gasket
31	GSA6005.31	Inlet Valve
32	GSA6005.32	Inlet Spring
33	SA682.V2-60	O-Ring, (Ex: 23.96 In: 18.72 Cs: 2.62)
34	GSA6005.34	Plastic Cover
35	GSA6005.35	Gasket
36	GSA6005.36	Air Inlet
37	GSA6005.37	Air Inlet Filter
38	GSA6005.38	Muffler
39	GSA6005.39	Side Handle

NOTE: It is our policy to continually improve products and as such we reserve the right to alter data, specifications and component parts without prior notice. There may be alternative versions of this product, please contact us should you require this information.

IMPORTANT: No liability is accepted for incorrect use of product. Spare parts must be fitted by a competent person

WARRANTY: Guarantee is 12 months from purchase date, proof of which will be required for any claim.