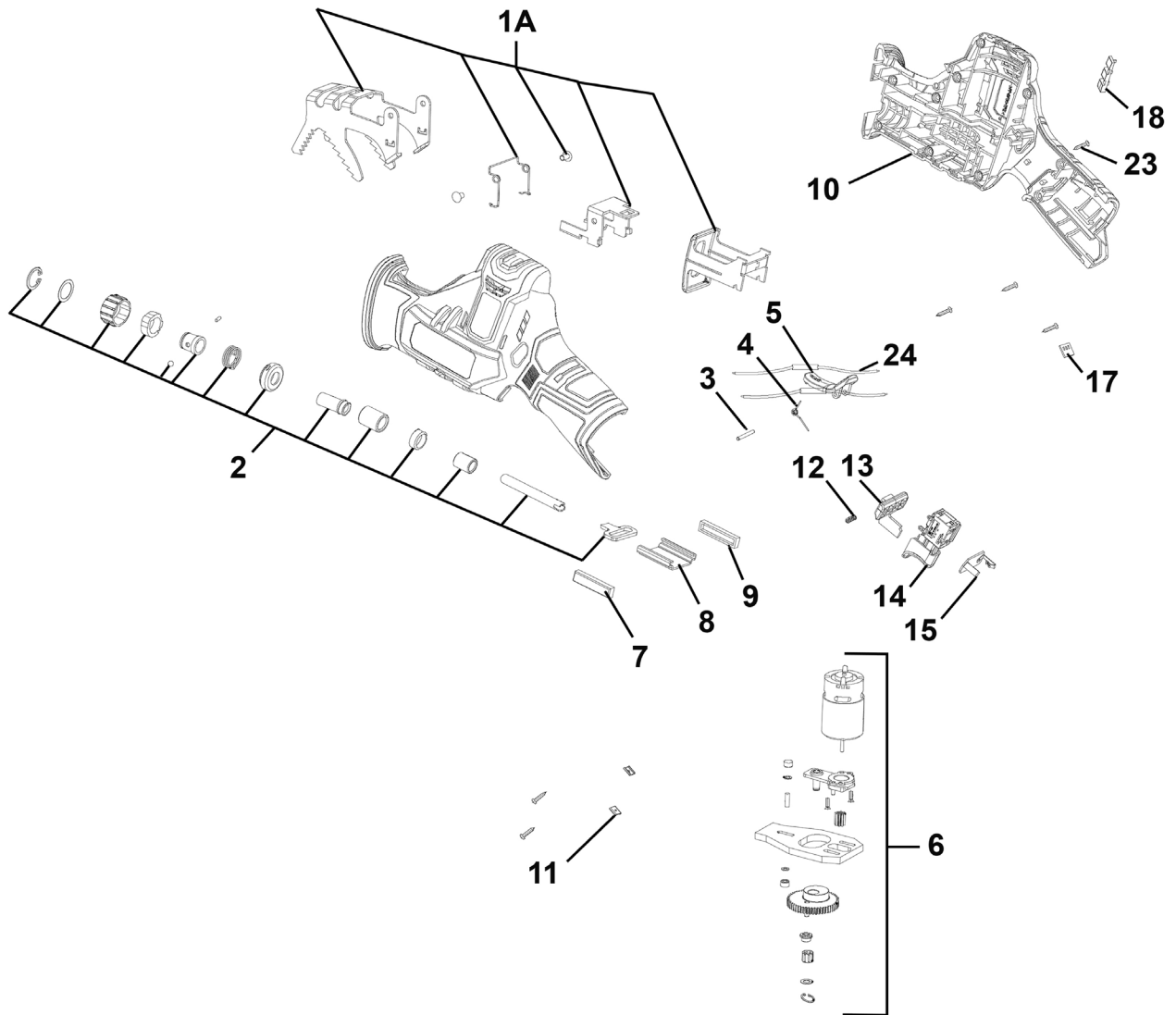




Parts Information:
**Cordless Reciprocating Saw Kit 10.8V 2Ah
 SV10.8 Series
 Model No: CP108VRS**



Item	Part No.	Description	Qty
1A	CP108VRSBO.01A	Blade Bracket Assembly	1
2	CP108VRSBO.02	Quick Release Chuck Assembly	1
3	CP108VRSBO.03	Retaining Pin	1
4	CP108VRSBO.04	Torsion Spring	1
5	CP108VRSBO.05	Lock Button	1
6	CP108VRSBO.06	Motor Assembly	1
7	CP108VRSBO.07	Holder, Left Side	1
8	CP108VRSBO.08	Guide Rail	1
9	CP108VRSBO.09	Holder, Right Side	1
10	CP108VRSBO.10	Housing	1
11	CP108VRSBO.11	Clip	2
12	CP108VRSBO.12	Self-Lock Button Spring	1

Item	Part No.	Description	Qty
13	CP108VRSBO.13	Self-Lock Button	1
14	CP108VRSBO.14	Switch	1
15	CP108VRSBO.15	Battery Connection	1
17	CP108VRSBO.17	Battery Indicator	1
18	CP108VRSBO.18	Battery Indicator Cover	1
23	CP108VRSBO.23	Housing Screw	10
24	CP108VRSBO.24	Inductance	2
--	CP108VBP	Power Tool Battery 10.8V 2Ah Li-Ion (See Catalogue)	--
--	CP108VMC	Battery Charger 10.8V Li-Ion (See Catalogue)	--

NOTE: It is our policy to continually improve products and as such we reserve the right to alter data, specifications and component parts without prior notice. There may be alternative versions of this product, please contact us should you require this information.

IMPORTANT: No liability is accepted for incorrect use of product. Spare parts must be fitted by a competent person

WARRANTY: Guarantee is 12 months from purchase date, proof of which will be required for any claim.

Sealey Group, Kempson Way, Suffolk Business Park, Bury St Edmunds, Suffolk. IP32 7AR



01284 757500



sales@sealey.co.uk



www.sealey.co.uk